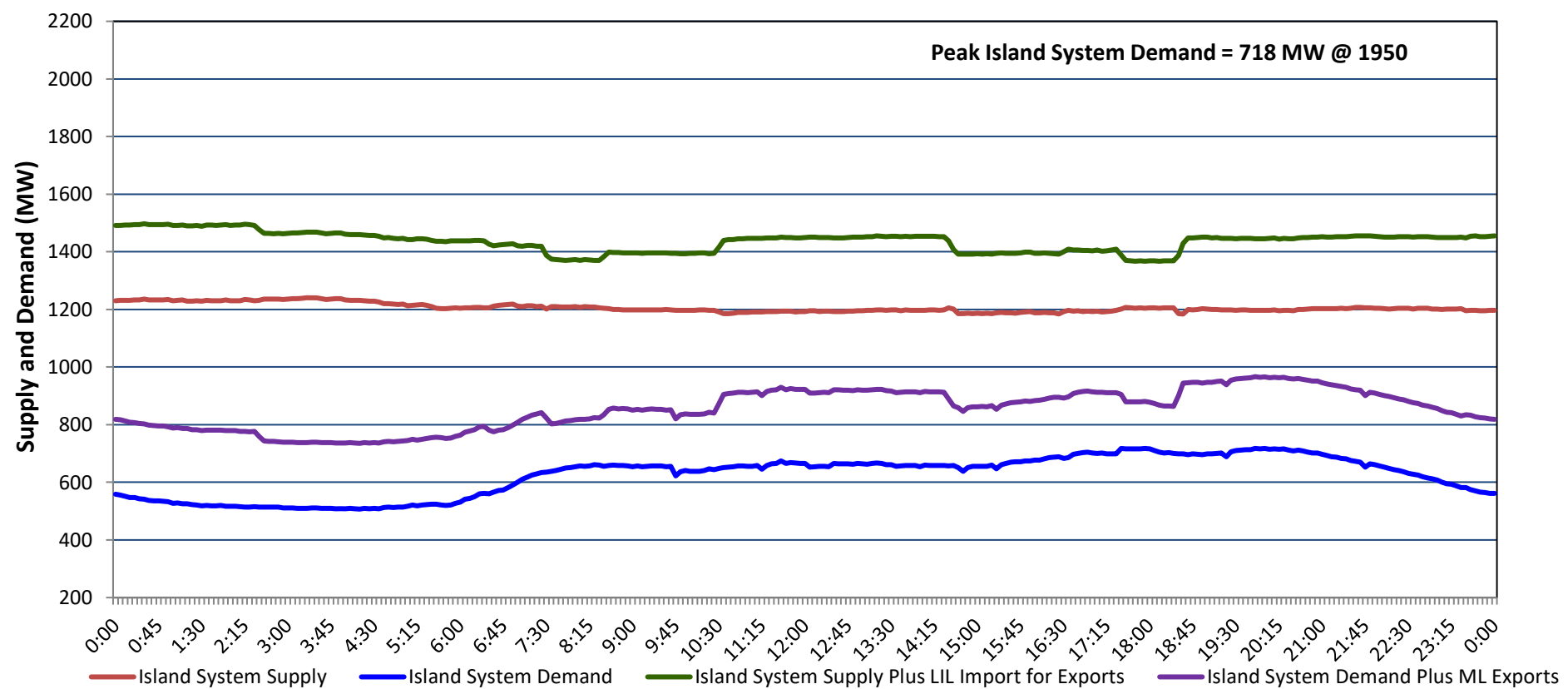


# Newfoundland Labrador Hydro (NLH) Supply and Demand Status Report Filed Wednesday, September 18, 2024

## Section 1 Island Interconnected System - Supply, Demand & Exports Actual 24 Hour System Performance For Tuesday, September 17, 2024



### Island Supply Notes For September 17, 2024 <sup>1</sup>

- A As of 2059 hours, July 13, 2023, Stephenville Gas Turbine unavailable due to forced outage (50 MW).
- B As of 1011 hours, April 12, 2024, Holyrood Unit 1 unavailable due to planned outage (170 MW).
- C As of 0700 hours, May 26, 2024, Holyrood Unit 3 unavailable due to planned outage (150 MW).
- D As of 0800 hours, August 04, 2024, Holyrood Unit 2 unavailable due to planned outage (170 MW).
- E As of 0800 hours, August 11, 2024, Bay d'Espoir Unit 4 unavailable due to planned outage (76.5 MW).
- F As of 1049 hours, August 25, 2024, Cat Arm Unit 1 unavailable due to planned outage (67 MW).
- G As of 0941 hours, September 15, 2024, Cat Arm Unit 2 unavailable due to planned outage (67 MW).
- H As of 0539 hours, September 16, 2024, Labrador Island Link available at 450 MW due to planned derating (700 MW) - Monopole.

## Section 2 Island Interconnected System - Supply, Demand & Outlook

Wed, Sep 18, 2024	Island System Outlook <sup>2</sup>	Seven-Day Forecast	Island System Daily Peak Demand (MW)	
			Forecast <sup>8</sup>	Adjusted <sup>6</sup>
Island System Supply: <sup>4</sup>	<b>1,195 MW</b>	Wednesday, September 18, 2024	<b>745</b>	<b>707</b>
NLH Island Generation: <sup>3,7</sup>	940 MW	Thursday, September 19, 2024	715	677
NLH Island Power Purchases: <sup>5</sup>	70 MW	Friday, September 20, 2024	745	707
NP and CBPP Owned Generation:	175 MW	Saturday, September 21, 2024	775	737
LIL Net Imports to Island: <sup>9</sup>	10 MW	Sunday, September 22, 2024	820	782
7-Day Island Peak Demand Forecast:	<b>875 MW</b>	Monday, September 23, 2024	875	837
		Tuesday, September 24, 2024	810	772

### Island Supply Notes For September 18, 2024

- Notes:
1. Generation outages for running and corrective maintenance are included. These are not unusual for power system operations. They generally do not impact customer supply. Hydro schedules outages to system equipment whenever possible to coincide with periods when customer demands are low and sufficient supply reserves are available. However, from time to time equipment outages are necessary and reserves may be impacted.
  2. As of 0800 Hours.
  3. Gross continuous unit output.
  4. Gross output from all Island sources (including Note 4).
  5. NLH Island Power Purchases include: ML Imports, Exploits Generation, Rattle Brook, Star Lake, Wind Generation and capacity assistance (when applicable).
  6. Adjusted for interruptible load and the impact of voltage reduction when applicable.
  7. Due to limitations inherent in the design of combustion turbines, the output of combustion turbines may be reduced in the event that ambient temperatures exceed the threshold required for full rated output. This threshold is dependent on the design of each turbine.
  8. Does not include ML Exports.
  9. LIL Import sunk in the Island System. Actual LIL flows will be restricted by various system conditions including, but not limited to, Island Load, ML Exports and Avalon Unit status.

## Section 3 Island Peak Demand and Exports Information Previous Day Actual Peak and Current Day Forecast Peak

Tue, Sep 17, 2024	Island Peak Demand <sup>10</sup>	19:50	718 MW
	Exports at Peak		249 MW
	LIL Net Imports to Island		342 MWh
Wed, Sep 18, 2024	Forecast Island Peak Demand		745 MW

- Notes: 10. Island Demand is supplied by NLH generation and purchases, LIL Imports plus generation owned and operated by Newfoundland Power and Corner Brook Pulp & Paper (Deer Lake Power, DLP).